

Hydro Therapy

We have a Hydro therapy pool within the building, the facility is accessible by the use of steps, or an overhead hoisting system.

The Hydro pool is available for hire, Monday - Sunday.

Sensory Therapy

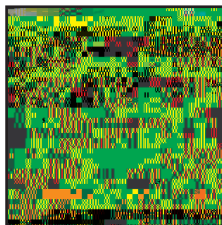
Within Bert Denning we have a Snoezelen Sensory Room, fully accessible by the use of an overhead hoisting system. This facility is available for hire between the hours 4pm and 8pm Monday - Friday, inclusive of weekend.

Kitchen/ Dining Room

The Bert Denning Centre has a small kitchen area for use, with access to cooking facilities. Lunches are available daily at a charge - all dietary needs are catered for.

Personal Care Facilities

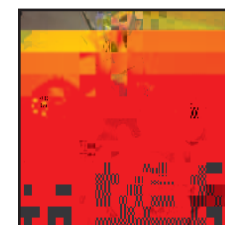
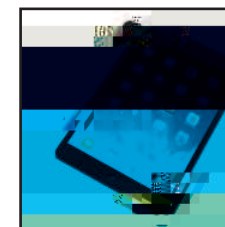
All toilet/care facilities within the building are accessible to individuals with physical needs, overhead tracking hoists and rise and fall changing beds are situated in the two main care rooms.



Activities

The aim of Bert Denning is to work with individuals to identify their personal preferences, to build upon new and existing skills, encouraging participation and social engagement and to work towards personal achievement, however large or small.

- | All activity schedules are person centred and planned through regular service user meetings, engagement is paramount.
- | Some of the activities on offer include -
- | Digital Inclusion / ipads
- | Sensory Stimulation
- | Hydro Therapy
- | Community Access
- | Therapeutic Craft
- | Physical Activities



Transport Provision

Transport is provided to those with an assessed need.

Charges

These are set annually by Blaenau Gwent County Borough Council.